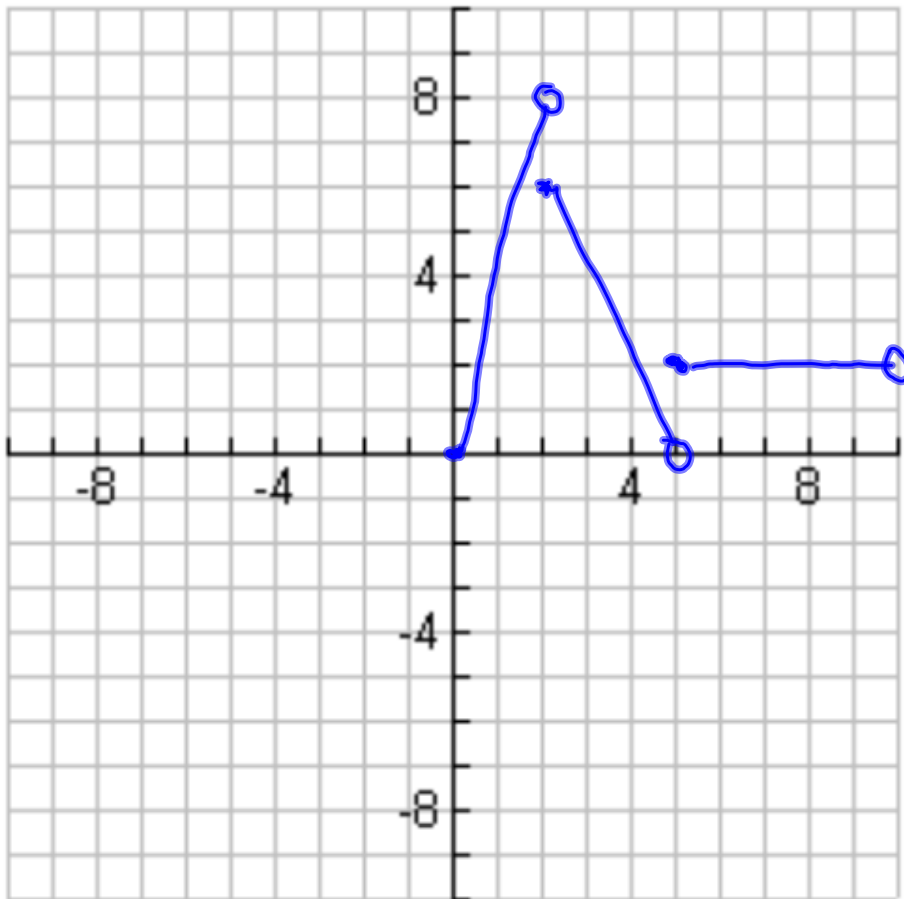


Homework

Pg. 129-130 #17-35 odd, 53-59 odd

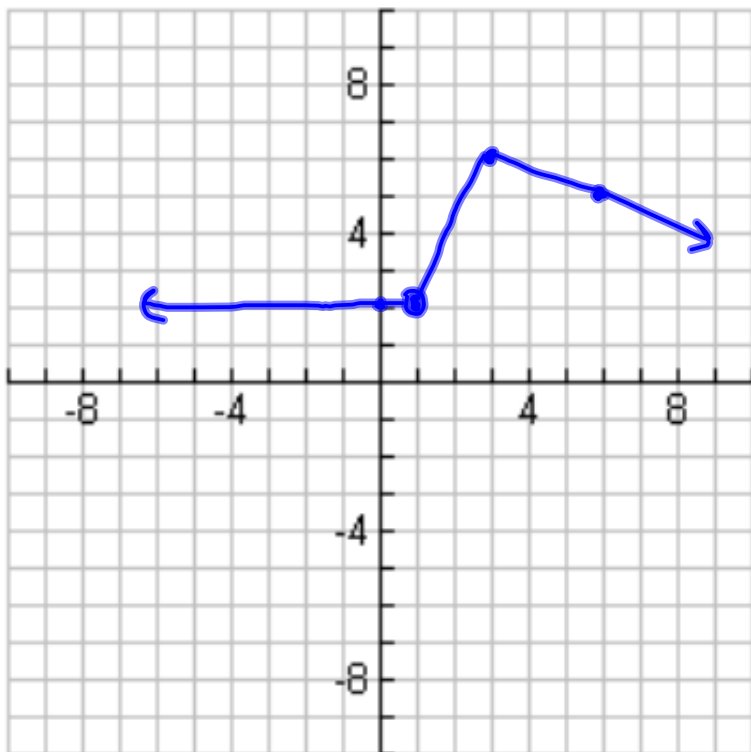
$$19) f(x) = \begin{cases} 4x & \\ -2x+10 & \\ 2 & \end{cases}$$

if $0 \leq x < 2$
 $(0, 0)$ $(2, 8)$
 if $2 \leq x < 5$
 $(2, 6)$ $(5, 0)$
 if $5 \leq x < 10$
 $(5, 2)$ $(10, 2)$

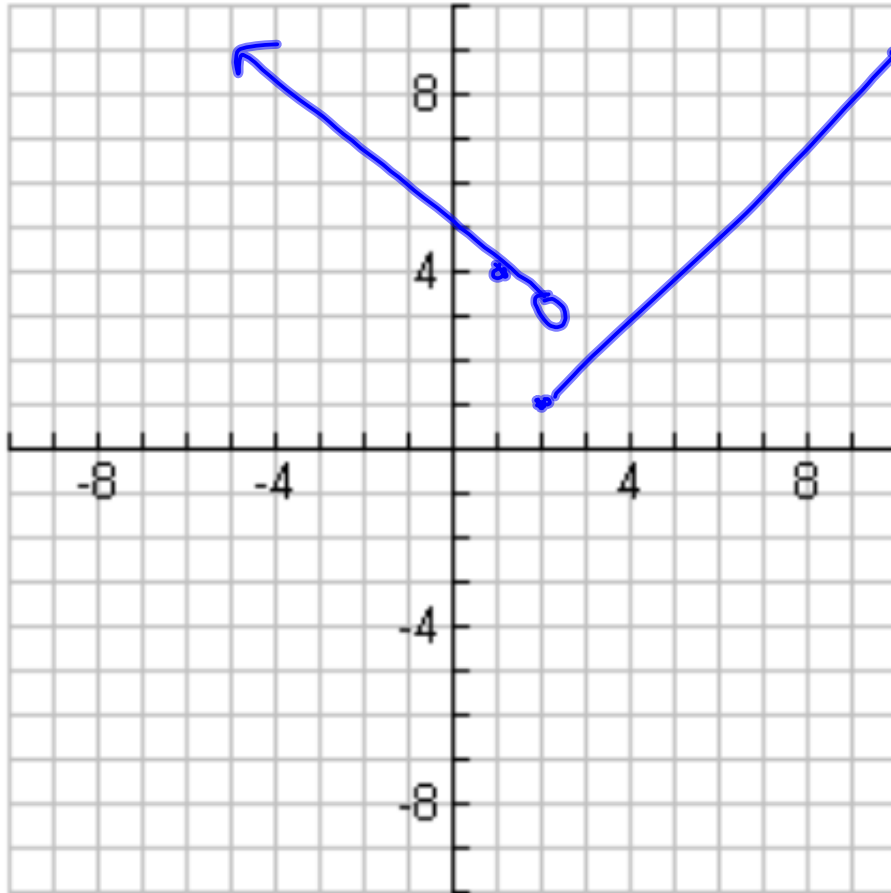


$$21) \quad b(x) = \begin{cases} 2 & \\ 2x & \\ 7 - \frac{1}{3}x & \end{cases}$$

$$\begin{aligned} & \text{if } x < 1 \\ & \quad (1, 2) (0, 2) \\ & \text{if } 1 \leq x \leq 3 \\ & \quad (1, 2) (3, 6) \\ & \text{if } x > 3 \\ & \quad (3, 6) (6, 5) \end{aligned}$$



$$23) f(x) = \begin{cases} 5-x & \text{if } x < 2 \\ x-1 & \text{if } 2 \leq x \leq 10 \end{cases}$$



$$(2, 3) (1, 4)$$
$$(2, 1) (10, 9)$$

$$25) \quad f(x) = \begin{cases} \frac{5}{4}x + 2 & \text{if } -4 < x \leq 0 \\ -\frac{1}{2}x + 2 & \text{if } 0 < x \leq 4 \end{cases}$$

$$f(x) = \begin{cases} -1x & \text{if } -3 < x \leq 2 \\ -1x + 5 & \text{if } x > 2 \end{cases}$$

$$y = mx + b$$

$$y = -1x + b$$

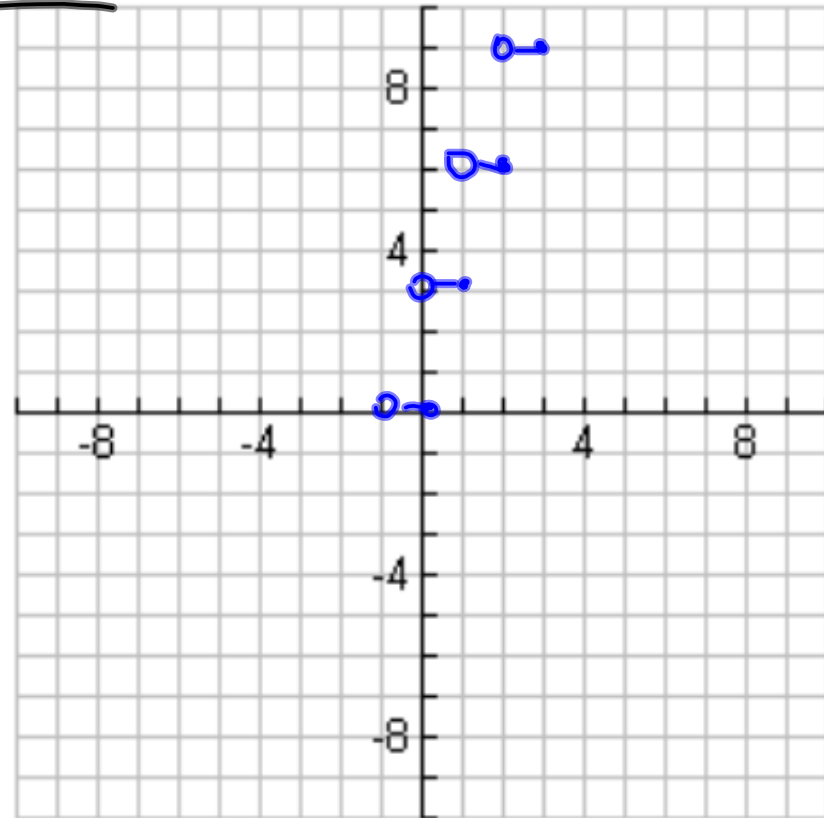
$$3 = -1(2) + b$$

$$3 = -2 + b$$

$$\begin{array}{r} +2 \quad +2 \\ \hline 5 = b \end{array}$$

53)

interval of x	$f(x) = 3 \lceil x \rceil$
$1 < x \leq 2$	6
$2 < x \leq 3$	9



$$59) f(x) = \frac{1}{2} |x|$$

